

Unwrapped
FAST /134°C

9 min

Wrapped
Class B / 134°C

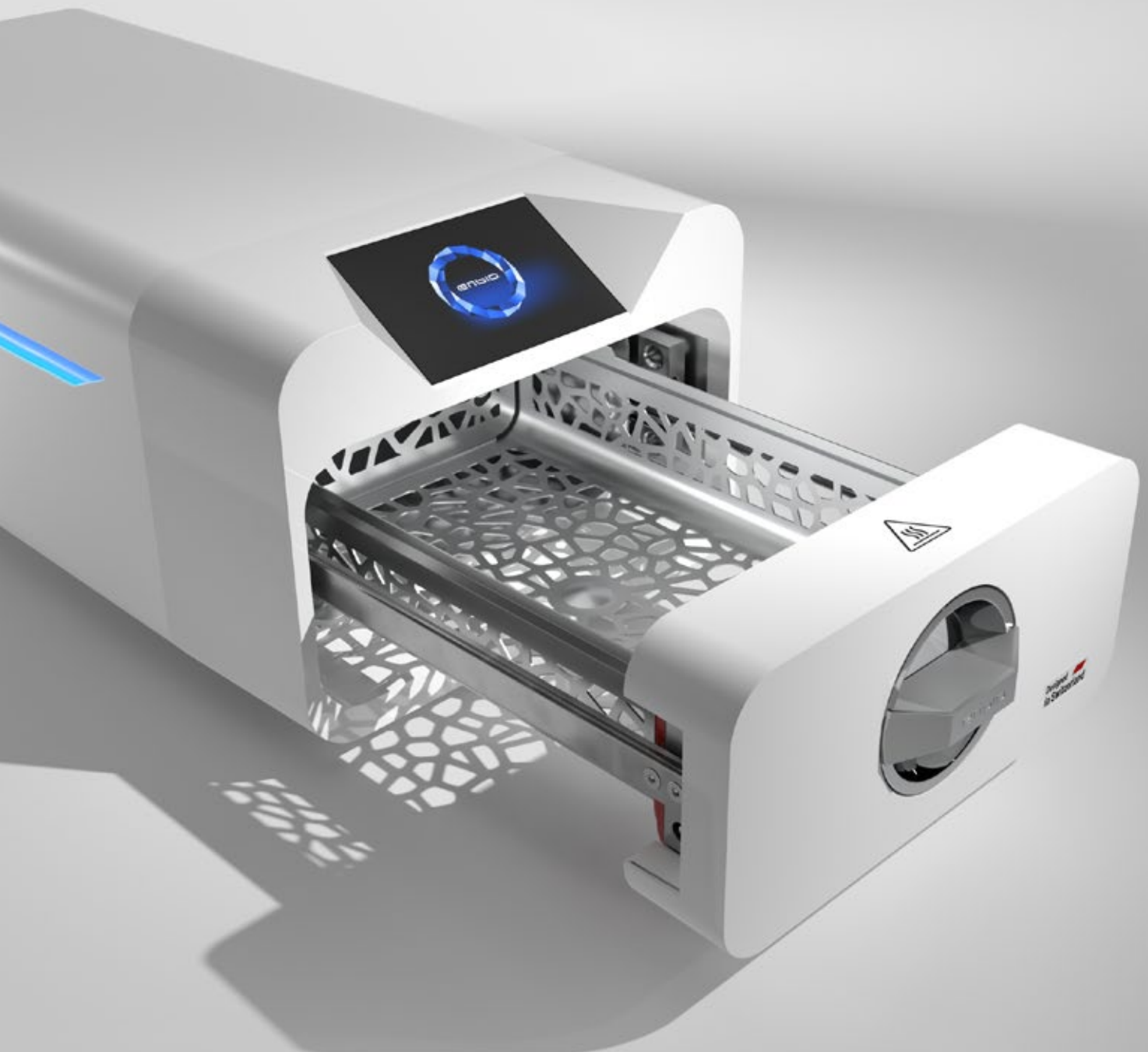
18 min

Wrapped
Class B / 121°C

30 min

Wrapped
Class B / 134°C

43 min

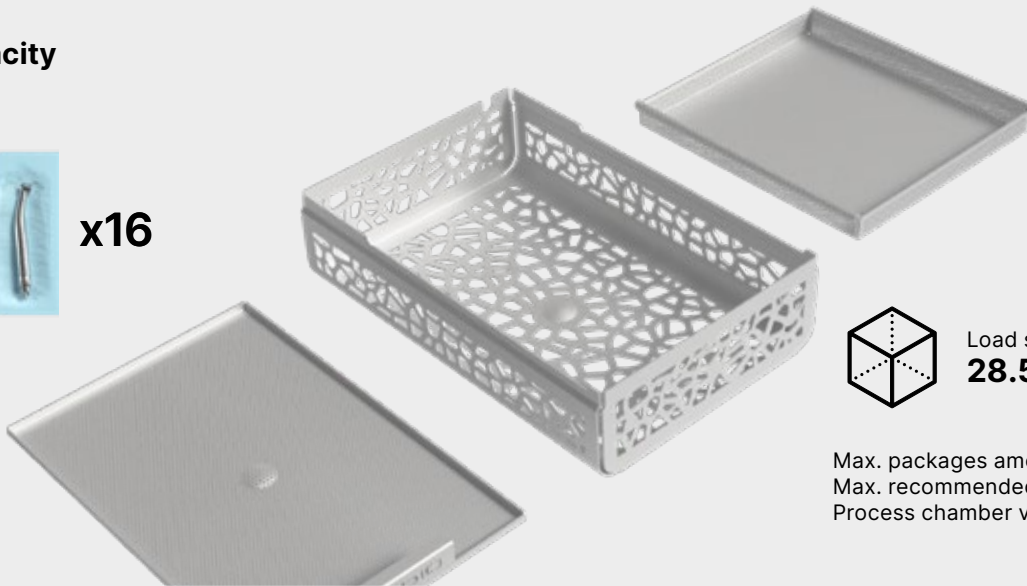


ENBIO PRO Autoclave Technical Data

Capacity



x16



Upper compartment
(for small tools)
20×18×2 cm



Load space
28.5×19×7 cm

Max. packages amount (circa)
Max. recommended batch weight
Process chamber volume

16
0.8 kg
5.3 l



Power supply

Enbio PRO works with any typical electrical outlet.



Data archiving

All process data are automatically written to a USB disk.



Water supply

Enbio uses distilled water from external tank.



Process reports

Take full control of your sterilization process with **my.enbio app**.

57.5 cm



27 cm



20 cm

Pressure & temperature

Working pressure **2.1 bar**
Max. pressure **2.45 bar**
Max. process temperature **138°C**

Electrical

Max. power supply **220-240V / 50 Hz**
Nominal power **3.25 kW**
Max. power consumption **16 A**

Misc.

Ingress protection **IP20**
Data archiving **USB**
Water conductivity* **< 15 µS/cm**

* - demineralized water only